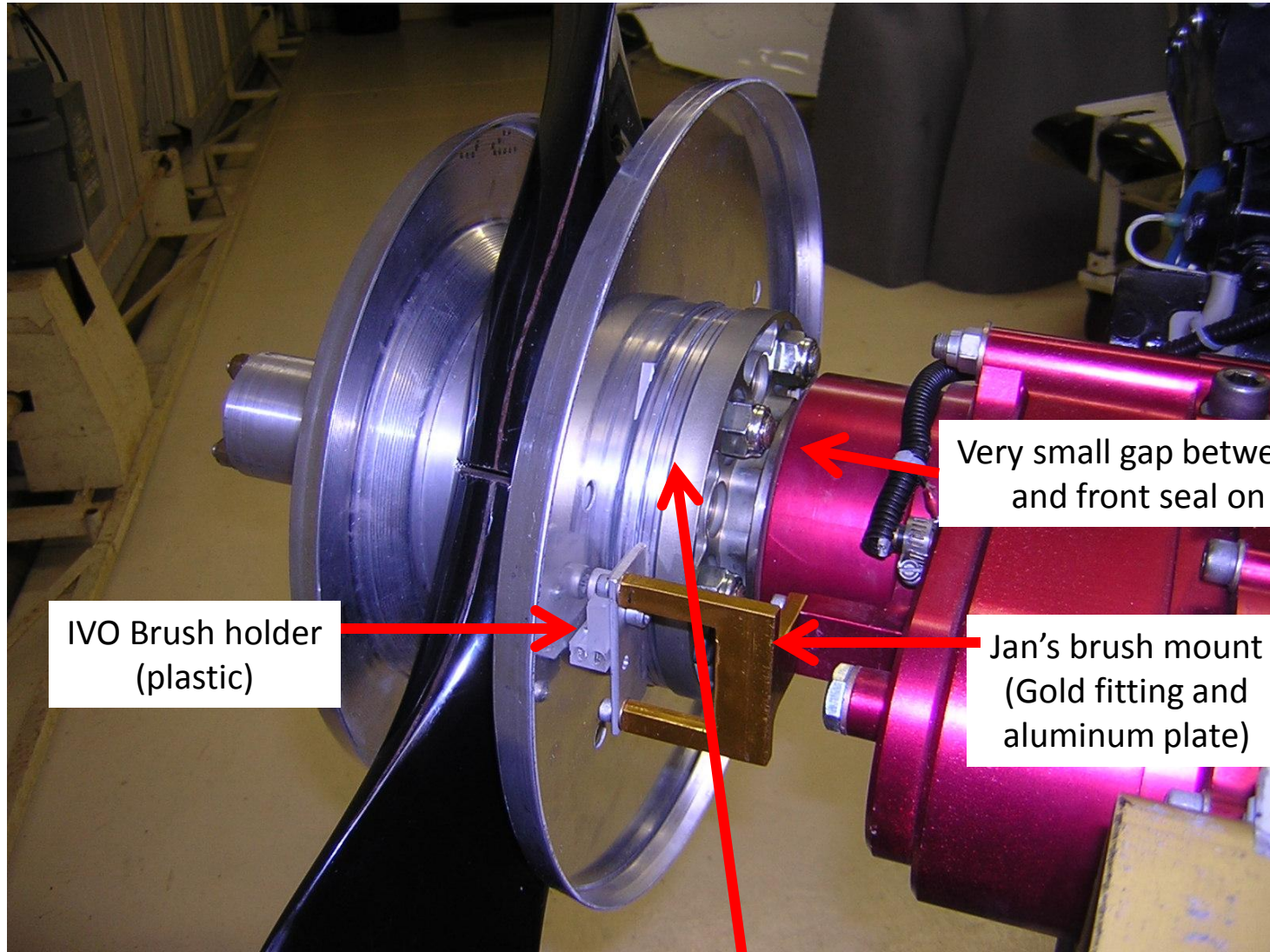


Spacers used between the IVO fwd plate and the spinner to position bulkhead to match spinner
NOTE: affects prop mounting bolt length

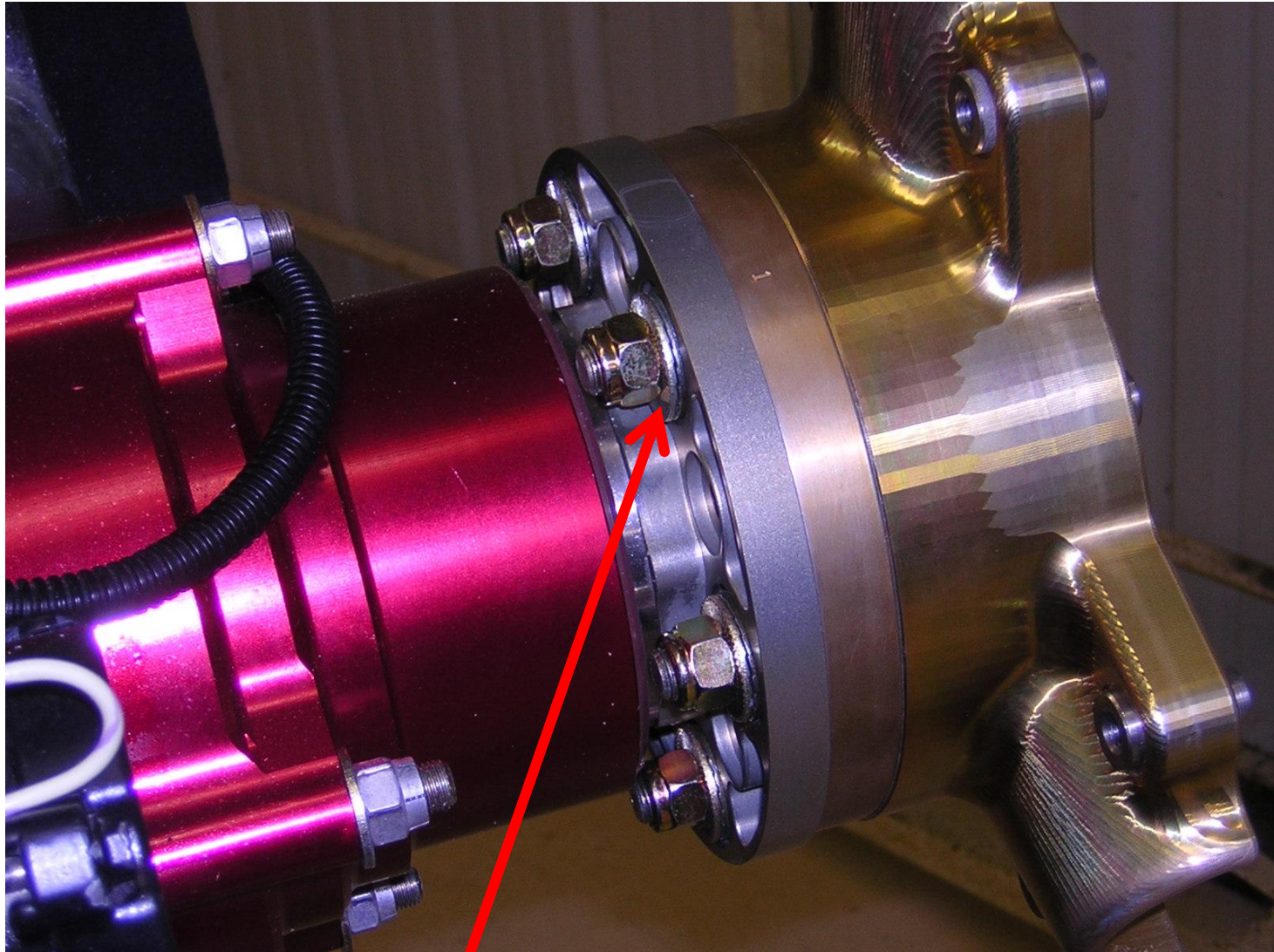


Very small gap between bolt/nut and front seal on gearbox

IVO Brush holder (plastic)

Jan's brush mount (Gold fitting and aluminum plate)

Nothing between rear of IVO plates (actually a plastic insulator) and the prop flange



This shows where the inserts go to interface the bolts to the prop flange